

TIMBERIX

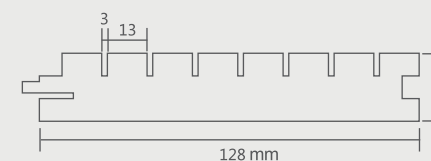
WOODEN GROOVED PANEL



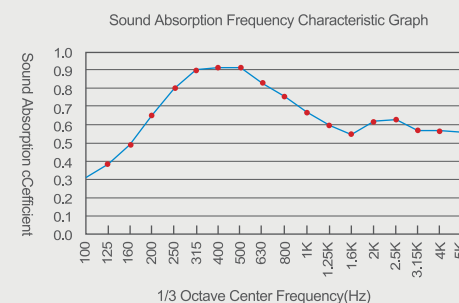
TIMBERIX wooden grooved panels reduce echoes by trapping and diffracting sound in the grooves and perforation found on the surface. The sound that passes through the perforation is further absorbed by an acoustic substrate such as fibreglass or mineral wool, which reduces reverberation in the room. Smaller grooves are better at attenuating high frequency sounds, whereas larger grooves are better at controlling low frequency sounds.



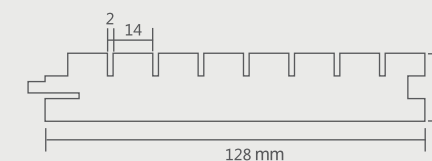
Pattern 13-3



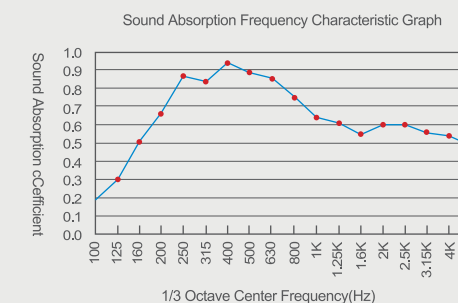
(Pattern 13-3) Perforation Rate:12%



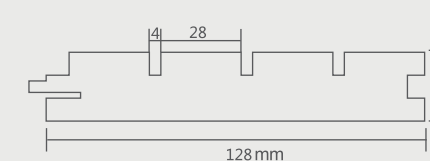
Pattern 14-2



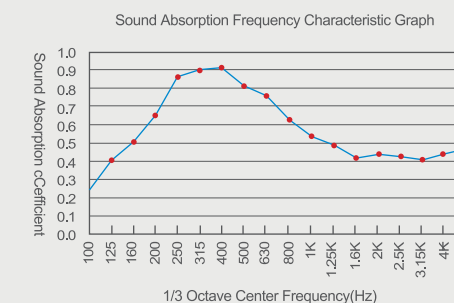
(Pattern 14-2) Perforation Rate:7.5%



Pattern 28-4



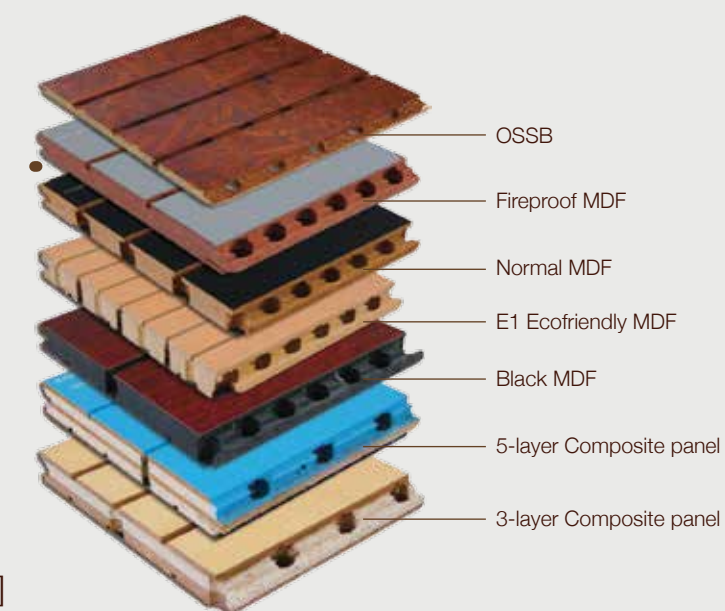
(Pattern 28-4) Perforation Rate:7%



Our wooden grooved acoustic panel is made up of a series of slats and grooves. Each panel has a machined tongue and groove joint for a seamless joinery. TIMBERIX wooden grooved panels come in 4 different patterns: 13-3, 14-2, 28-4, 59-5. The first number refers to the slat size (mm) and second number refers to the groove size (mm). The surface comes in 4 types of finishing: paint, melamine, PP, and veneer. The base material can be made of MDF, fire-resistant MDF, eco-friendly MDF, black MDF, 3-layer composite, 5-layer composite or OSB.

Specifications

1. Structure: Base Material, Finishing & Fleece
2. Material: E1 MDF, FR MDF, MgO Composite Board, etc.
3. Finishing: Paint, Melamine, PP, Veneer, etc.
4. Standard Dimension: 2440*192mm, 2440*128mm
5. Standard Thickness: 12mm, 15mm,18mm
6. Standard Pattern: 13-3,14-2, 28-4, 59-5
7. Eco-Friendly Test: EN 13986, E1
8. Fire-Rated Test: ASTM E84-12a Class A, BS476 [Part 7] Class 1



INSTALLATION: TIMBERIX WOODEN GROOVED PANEL



A) Preparation

1. Place of installation must be dry, with temperature no less than 10 degrees Celsius.
2. Humidity level should be kept between 40% to 60%.
3. TIMBERIX panels must be placed on site for at least 48 hours in order to adapt to the environmental conditions.
4. Distance between each wooden batten should be less than 500mm, and that between each steel keel should be no more than 600mm.

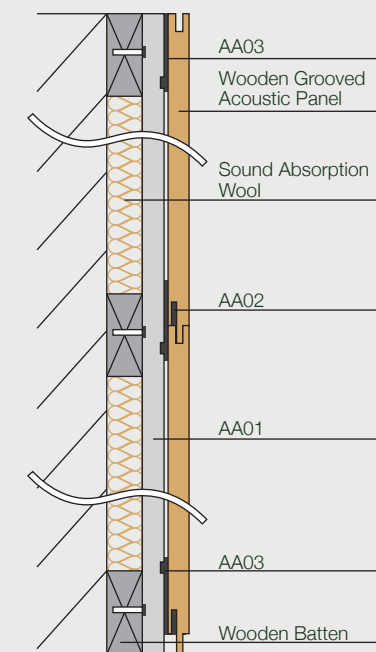
B) Installation

1. Mark out placement of TIMBERIX panels, and take into account M&E positions.
2. Cut panels to size according to final positions.
3. Decide on type of installation system to use.
4. Install acoustic substrate of choice.
5. Join TIMBERIX wooden grooved panels from top-to-bottom, and left-to-right.
6. For wood laminate and veneer finishes, ensure that wooden grooved panels are installed with matching grain directions.
7. Clean surface of the TIMBERIX panels with compressed air and gently wipe with dry cloth.

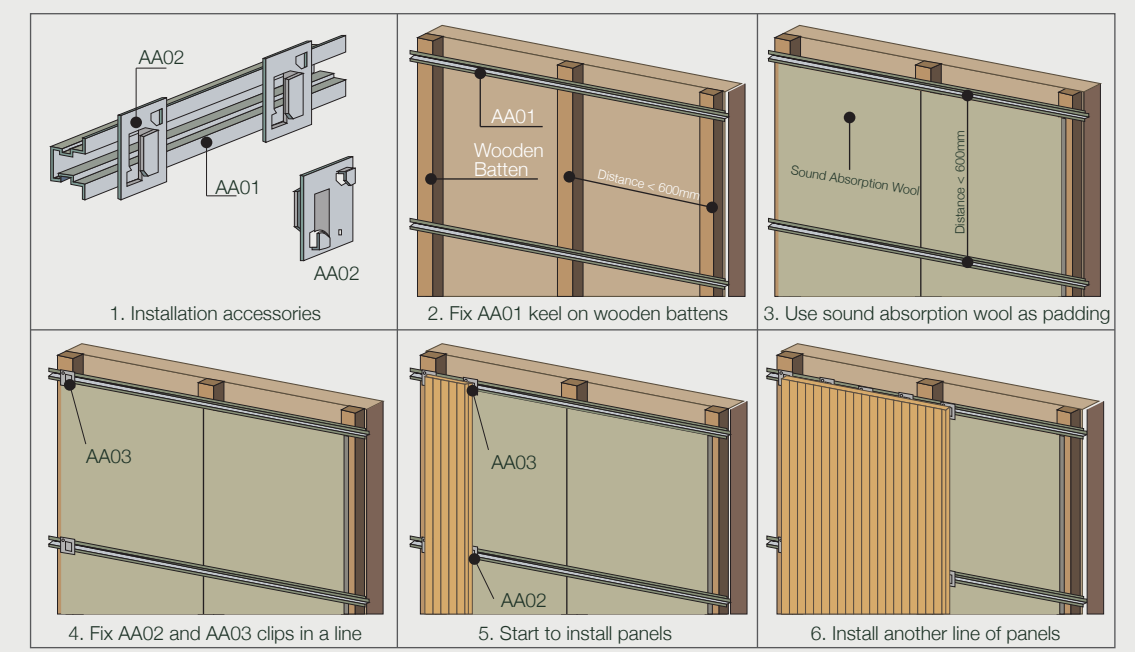


C) Installation System

1. Steel keel system
2. Wooden batten system



Cross-section Structure



Installation: Steel Keel System